



300.30 Acres, George West, Texas

Offered at \$1,498,500



NHWY 37-Access / CR 321

For more information, please view
www.desertflowerrealty.com



INFORMATION:

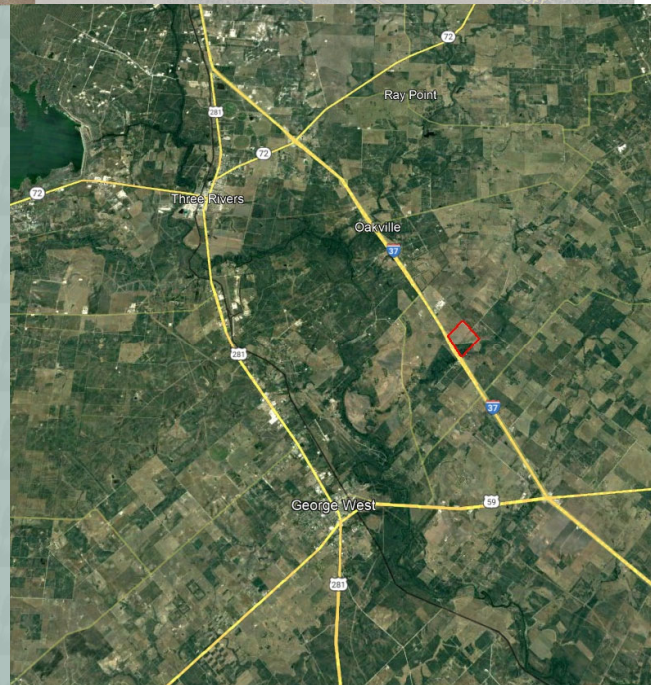
- **74.3 Acres Brush**
- **226 Acres Farmland**
- Large, mature Live Oak and Mesquite Trees
- Fine Sandy Loam and Sandy Clay Loam Soil
- Old Homesite
- Currently leased, income producing farmland


George West: 8 mi. Southwest
San Antonio: 70 mi. North
Sinton: 45 mi. Southeast

Three Rivers: 12 mi. Northwest
Beeville: 22 mi. East
Corpus Christi: 45 mi. East

DIRECTIONS:


From George West, travel East on HWY 59 for approximately 2.3 miles, turn left on FM 799 and travel approximately 3.8 mile, then turn left onto I-37 Frontage Rd and travel North on frontage road for approximately 1.2 mile. Property is on the corner of I-37 Access Road and County Road 321.





Desert Flower Realty, Inc.
 PO Box 1657. 506 Houston St.
 George West, Texas 78022

John Walker, Broker
 361.449.2051 office
 361.362.9499 cell
walker@desertflowerrealty.com



DESERT FLOWER REALTY

Information, while based upon information furnished from other sources deemed to be reliable, is not in any way, warranted by Desert Flower Realty, Inc. This offering is subject to prior changes in price or terms and withdrawal without notice.